

MANLEY

LABORATORIES, INC.

OWNER'S MANUAL

**MANLEY 175 WATT
MONOBLOCK AMPLIFIER**

MANLEY LABORATORIES, INC.

13880 MAGNOLIA AVE.

CHINO, CA. 91710

TEL: (909) 627-4256

FAX: (909) 628-2482

CONTENTS

<i>SECTION</i>	<i>PAGE</i>
INTRODUCTION	3
MAINS CONNECTIONS	4
CONNECTING YOUR AMPLIFIER	5
DIAGRAM TOP VIEW & TUBE TYPES	6
BIAS PROCEDURES	7
OPERATIONAL NOTES	8
SPECIFICATIONS	9
WARRANTY	10
WARRANTY REGISTRATION	11

INTRODUCTION

THANK YOU!...

for choosing the Manley Euro 175 Monoblock Amplifiers. Designed by David Manley, the Manley Euro 175 Monoblock Amplifiers use only the best available components, with the shortest and cleanest signal path possible, and with the use of our own in-house CNC machine shop we can provide you with an amplifier that looks as good as it sounds.

The circuit and the components used have been chosen carefully after years of development and refinement for reliability, constancy and most importantly, musical, accurate, and emotional delivery of the sound. The circuit topology is similar to other designs in the MANLEY range. This amplifier is configured for ULTRALINEAR or "partial-triode" operation which achieves the seductive quality of triode operation without the inefficiency and sacrifice in power of triode operation. We emphasize big, beefy reservoir capacitors in the high voltage supplies giving plenty of instant energy for dynamic performance of transient peaks and bass performance which often exceeds that of rival solid-state amplifiers. We run high voltages on the plates of the output tubes and are thus able to run them at lower current which will result in longer life for the output tubes. Each output tube has its own bias adjust, and the procedure for adjusting each tube's current draw is described in this manual. The output transformer has been factory set in series-parallel for an optimum 5 ohm load which will drive most speakers. Other output impedances can be achieved by changing the configuration of the transformer secondary. Please contact us at the factory should you need to do this.

Thank you again, and please enjoy!

GENERAL NOTES

LOCATION & VENTILATION

The Manley Euro 175 Monoblock Amplifiers must be installed in a stable location with ample ventilation. Allow a minimum of 2 inches of clearance on the top and sides of the amplifiers, such that constant movement of air can flow. Do not place amplifiers directly on high pile carpet or any other surface that will block the ventilation holes underneath the amplifiers. If you have small children or pets, you should consider placing the amplifiers out of reach or using the optional cages (covers) available as an option to prevent damage to the amplifier or damage to your small children or pets by the amplifier as the tubes do get hot during operation.

WATER & MOISTURE

As with any electrical equipment, these amplifiers should not be used near water or moisture. If liquid enters the amplifier, it must be immediately returned to your dealer for servicing.

SERVICING

The user should not attempt to service the amplifier beyond that described in the owner's manual. Refer all servicing other than biasing and tube replacement to Manley Laboratories

SPECIAL NOTES

Tubes may become loose during transit. Straighten and press down each tube before plugging the amplifier into the mains socket. Furthermore, do not touch the tubes after the amplifier has been switched on, as the tubes become very hot during operation and should only be handled after the power has been turned off and the tubes have cooled.



WARNING!



**TO PREVENT THE RISK OF ELECTRIC SHOCK
DO NOT OPEN THE CABINET
REFER SERVICING TO
QUALIFIED PERSONEL**

MAINS CONNECTIONS

Your amplifier has been factory set to the correct mains voltage for your country. The voltage setting is marked on the serial badge, located on the rear panel. Check that this complies with your local supply.

Export units for certain markets have a moulded mains plug fitted to comply with local requirements. If your unit does not have a plug fitted the coloured wires should be connected to the appropriate plug terminals in accordance with the following code.

GREEN/YELLOW	EARTH	terminal
BLUE	NEUTRAL	terminal
BROWN	LIVE	terminal

As the colours of the wires in the mains lead may not correspond with the coloured marking identifying the terminals in your plug proceed as follows;

The wire which is coloured GREEN/YELLOW must be connected to the terminal in the plug which is marked by the letter E or by the safety earth symbol or coloured GREEN or GREEN and YELLOW.

The wire which is coloured BLUE must be connected to the terminal in the plug which is marked by the letter N or coloured BLACK.

The wire which is coloured BROWN must be connected to the terminal in the plug which is marked by the letter L or coloured RED.

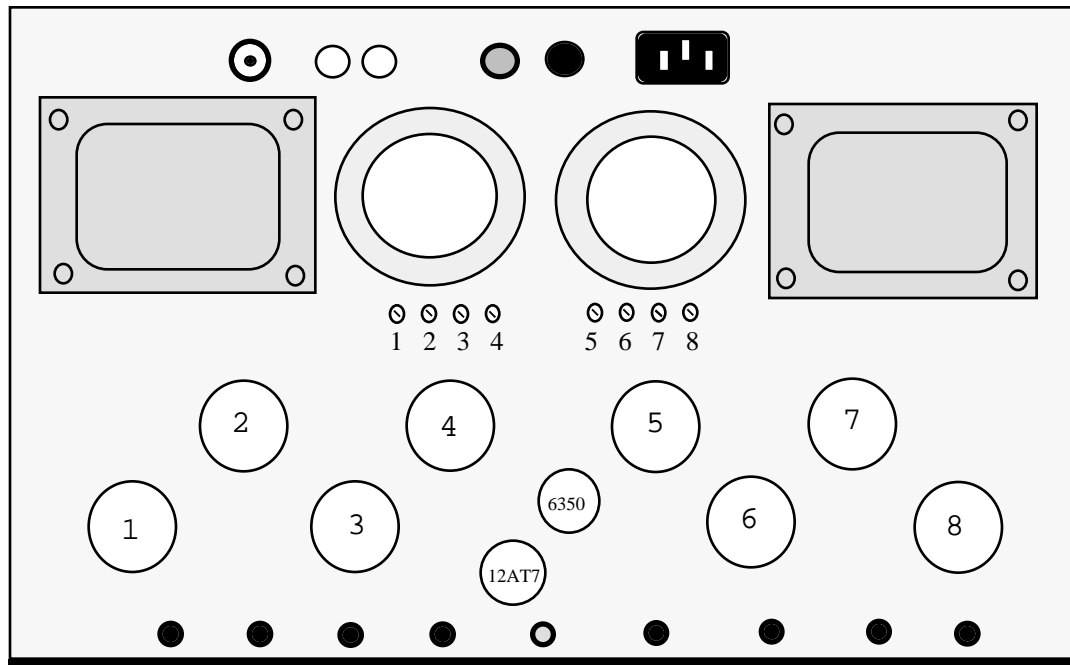
DO NOT CONNECT/SWITCH ON THE MAINS SUPPLY UNTIL ALL OTHER CONNECTIONS HAVE BEEN MADE.

CONNECTING YOUR AMPLIFIER

Setting up your amplifiers is rather easy.

1. Connect all source components (turntable, CD, Tuner, Tape DAT, etc.) to your preamplifier.
2. Connect the interconnects from the output of the preamplifier or switching center to the RCA input on the top rear of the amplifiers.
3. Connect the hot or "+" speaker cable to the red binding post and the common or "-" speaker cable to the black binding post (See diagram 2). Ensure that the other end of the cable is connected correctly to the speaker. Tighten the binding posts by hand. If you use a nut-driver (3/8") **do not over-tighten** the posts or you may break the connections inside the amplifier.
4. Ensure that the "mains" switch on the front panel is in the "off" or "0" position.
5. Turn on Preamplifier and any source components you plan to use.
6. Plug amplifier into wall outlet.
7. Turn on the amplifier and allow it a minute or so to 'warm up' before playing any audio signal.
8. Turn up the volume and enjoy.

INPUT OUTPUT B+ MAINS IEC MAINS
RCA FUSES IN



1 2 3 4 GND 5 6 7 8

BIAS READOUT POINTS

Amplifier Overhead View
 Bias Adjustment Points:
 Tube Location

OUTPUT TUBES: 8 X 5881

The 5881 is a Russian military up-rated 6L6 type. This has been proven to be the rugged and reliable of the 6L6 types and we strongly emphasize that only the 5881 should be used in this amplifier. The MANLEY 175 WATT MONOBLOCK has been thoroughly optimised around this tube.

DRIVER TUBE: 6350

The 6350 is an American military uprated version of the 12BH7A but WITH ONE IMPORTANT DIFFERENCE!!! The 6350 has a different pinout to the 12BH7A. Thus ONLY the 6350 can be used in this circuit. THERE IS NO OTHER SUBSTITUTE!

INPUT TUBE: 12AT7WA

The 12AT7WA has several equivalent numbers, (12AT7, 12AT7A, 6201, ECC81, etc.) Any of these types may be used. We have selected this 12AT7WA very carefully for noise, microphonics, and constancy. Replacement tubes of premium quality are always available from MANLEY LABORATORIES.

BIAS PROCEDURES

The Manley Euro 175 Monoblock Amplifiers uses a fixed bias system that requires very little attention. If you wish to adjust or check the bias, follow the following steps. We suggest that the bias be checked and reset every 3-4 months.

For this procedure you will need a voltmeter (a hand held autoranging DMM digital multimeter is the easiest) and a small flat screwdriver.

1. The first step to setting the bias is to turn on the amplifier and ensure that there is zero signal input, either leave the preamplifier or source signal turned off or unplug the amplifier input. Also, leave your loudspeakers connected as these provide an ideal load on the output. It is recommended that you leave the amplifier on long enough to ensure that the tubes have reached their stable current draw, at least 1/2 hour is recommended.
2. Page 6 shows the top view of the amplifier, you can see 4 black tip jacks and 1 green tip jack. To measure the current draw of each output tube first set the meter to read 'millivolts' DC (direct current). Place the positive meter probe (red) into the black tip jack for the tube you wish to measure and the negative meter probe (black) in the green (GROUND) tip jack.
3. Each of the eight (8) output tubes can have its own current draw adjusted by adjusting its own bias trim pot. On the diagram, you can see the numbering sequence for the 8 output tubes, the corresponding tip jacks (measurement points) and bias adjust pots. Everything reads left to right.
4. Place the red meter positive probe in the first black tip jack (negative probes remains in the green tip jack for whole biasing procedure) and adjust the first bias trim pot until you measure 260mV to 275 mV. Since you are measuring across a 10 ohm cathode resistor, this would correspond to a 26 to 27 mA bias current by Ohm's law.
5. If you are unable to bring the voltage down to 260 to 275 mV on any tube then we recommend that the tube be carefully watched or replaced.
6. Follow step 4 with the remaining tubes. Once they are all set, your amplifier should be in perfect operation.
7. Whenever replacing an output tube, or when retubing the unit, use tubes of the same type and quality as was fit by the factory. Watch and adjust the bias for the specific output tube or tubes you are replacing as soon as you turn on the amplifier, then check again after a half hour, and again in a few hours. Should you have any questions, or wish to purchase approved tubes from us here at Manley Labs, please do not hesitate to call.

OPERATIONAL NOTES

SWITCHING ON

The power switch is located on the lower left hand corner of the front panel. Push the top of the rocker switch (1) to turn on the amplifier and the bottom of the rocker switch to turn off the amplifier. The LED and the back-lit insert panel will illuminate indicating that the amplifier is on.

RUNNING

It is not recommended that you leave your amplifier permanently switched on. This only wastes electricity and tube life. Your amplifier has solid state rectification and reaches peak operating condition in approximately 30 minutes.

TUBE LIFE

As with all tubes, their quality degrades with age. This is due to cathode emission, a natural process found in all tubes. We recommend that you have your amplifier checked every 3-4 years, depending on usage. Bias should be checked every few months.

PANEL LAMP

The lamp which illuminates the front panel insert is easily replaceable should it ever burn out. To replace it use only the same type with the same or greater voltage rating. In these amplifiers, the lamp is a FUSE LAMP STYLE 8V 0.15mA. Dimensions are 1/4" x 1 1/4".

To replace the lamp, first turn off the amplifier and unplug the power cord!

Remove the bottom cover and locate the lamp holder which sets behind the front panel insert. Do not touch any other components inside the amplifier as high voltages may be present even after the amplifier is unplugged, sometimes for weeks! Carefully pry out the old lamp from the clips and firmly replace with the new lamp of the same type and rating. Replace the bottom cover after you are through.

SPECIFICATIONS

Vacuum Tubes:	8 x 5881(Output), 1 x 6350 (Driver), 1 x 12AT7 (Input)	
Output Power	180 Watts (@1.5% THD 5 ohm load) 169 Watts (@1.5% THD 4 ohm load) 145 Watts (@1.5% THD 8 ohm load)	
Frequency Response, +/- .5 dB	10 Hz - 40 KHz	
Input Sensitivity	1.4V	
Input Impedance	100 KOhm	
Load Impedance	5 Ohm (factory set)	
S/N Ratio @180W	-80 dB	
Power Consumption	240 Watts	Quiescent
	480 Watts	Full Power
Mains Fuse	100, 110, 120V	6 A (Slo-Blo)
	220, 240 V	3 A (Slo-Blo)
B+ Fuse	1A	
Panel lamp	8V .15mA FUSE LAMP TYPE	
Dimensions	W=19, D=13, H=7 inches	
Shipping Weight	54 lbs	

WARRANTY

All Manley Laboratories equipment is covered by a limited warranty against defects in materials and workmanship for a period of 90 days from date of purchase to the original purchaser only. A further optional limited 5 year warranty is available to the original purchaser upon proper registration of ownership within 30 days of date of first purchase.

Proper registration is made by filling out and returning to the factory the warranty card attached to this general warranty statement, along with a copy of the original sales receipt as proof of the original date of purchase. Only 1 card is issued with each unit, and the serial number is already recorded on it.

If the warranty registration card has already been removed then this is not a new unit, and is therefore not warranted by the factory. If you believe this to be a new unit then please contact the factory with the details of purchase.

This warranty is provided by the dealer where the unit was purchased, and by Manley Laboratories, Inc. Under the terms of the warranty defective parts will be repaired or replaced without charge, excepting the cost of tubes. No warranty is offered on tubes, unless:

1. a Manley Laboratories preamplifier is used with a Manley Laboratories amplifier, and
2. the warranty registration card is filled out.

In such a case a 6 month warranty on tubes is available with the correct recording of the serial number of the preamplifier on your warranty registration card.

If a Manley Laboratories product fails to meet the above warranty, then the purchaser's sole remedy shall be to return the product to Manley Laboratories, where the defect will be repaired without charge for parts and labour. The product will then be returned via prepaid, insured freight, method and carrier to be determined solely by Manley Laboratories. All returns to the factory must be in the original packing, (new packing will be supplied for no charge if needed), accompanied by a written description of the defect, and must be shipped to Manley Laboratories via insured freight at the customer's own expense. Charges for unauthorized service and transportation costs are not reimbursable under this warranty, and all warranties, express or implied, become null and void where the product has been damaged by misuse, accident, neglect, modification, tampering or unauthorized alteration by anyone other than Manley Laboratories.

The warrantor assumes no liability for property damage or any other incidental or consequential damage whatsoever which may result from failure of this product. Any and all warranties of merchantability and fitness implied by law are limited to the duration of the expressed warranty. All warranties apply only to Manley Laboratories products purchased and used in the USA.

Some states do not allow limitations on how long an implied warranty lasts, so the above limitations may not apply to you. Some states do not allow the exclusion or limitation of incidental or consequential damages, so the above exclusion may not apply to you.

This warranty gives you specific legal rights and you may also have other rights which vary from state to state.

WARRANTY REGISTRATION

We ask that you please fill out this registration form and send the bottom half to:

MANLEY LABORATORIES
REGISTRATION DEPARTMENT
13880 MAGNOLIA AVE.
CHINO CA, 91710

Registration entitles you to product support, full warranty benefits, and notice of product enhancements and upgrades. You MUST complete and return the following to validate your warranty and registration. Thank you again for choosing Manley Laboratories.

MODEL _____ SERIAL No. _____

PURCHASE DATE _____ SUPPLIER _____

PLEASE DETACH THIS PORTION AND SEND IT TO MANLEY LABORATORIES

MODEL: MANLEY 175 MONO SERIAL No. _____

PURCHASE DATE _____ SUPPLIER _____

NAME OF OWNER _____

ADDRESS _____

CITY, STATE, ZIP _____

TELEPHONE NUMBER _____

Serial #'s of Associated Manley Laboratories Equipment _____
